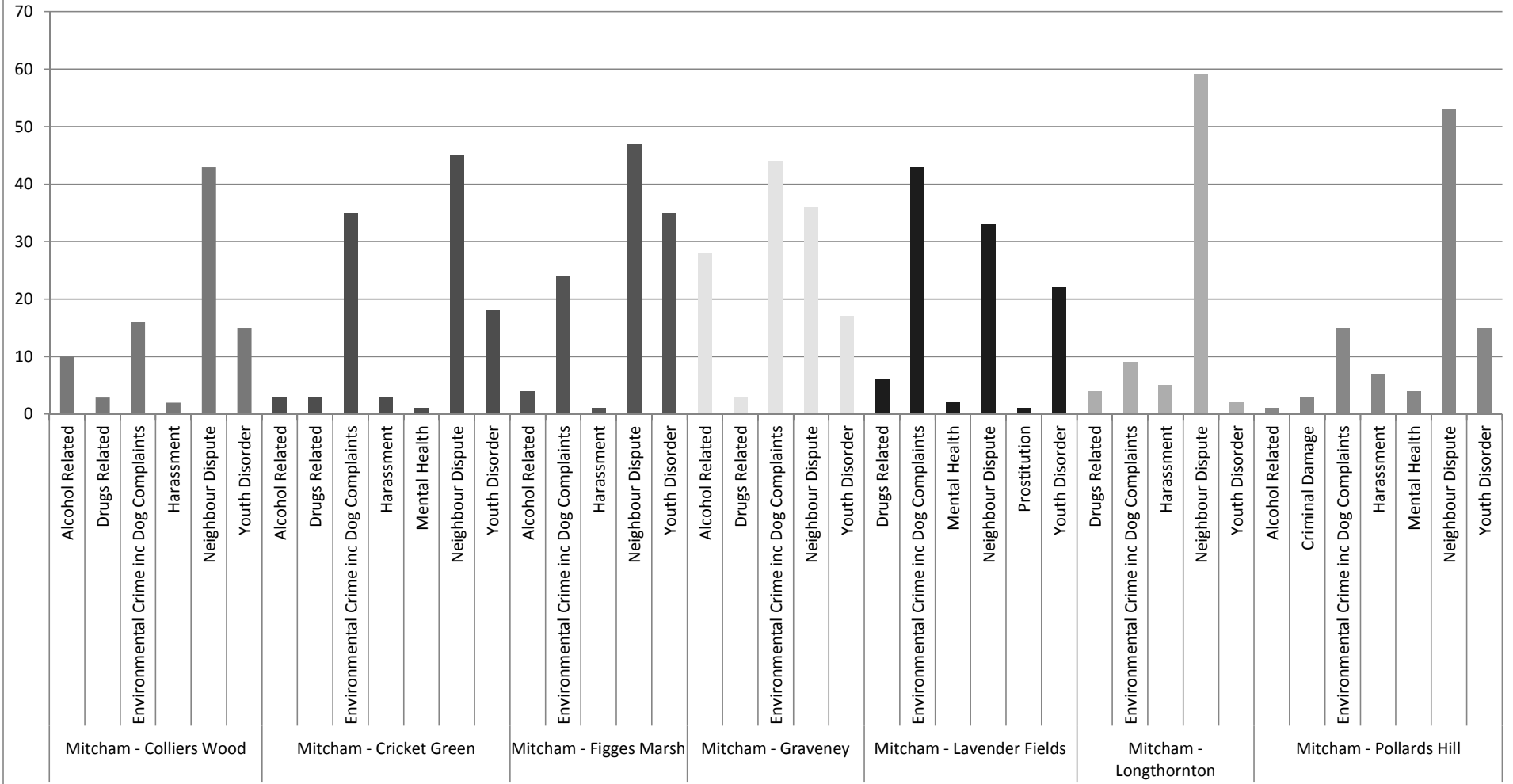
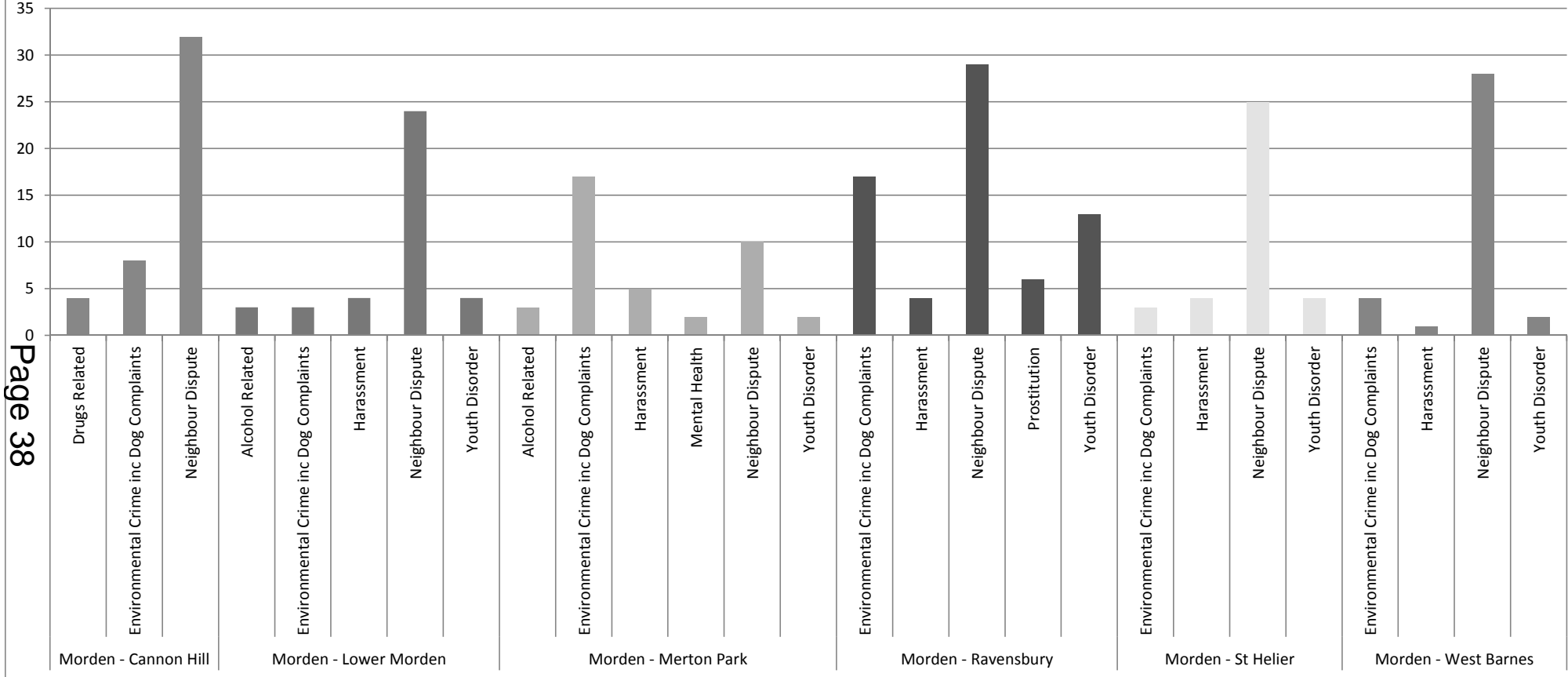


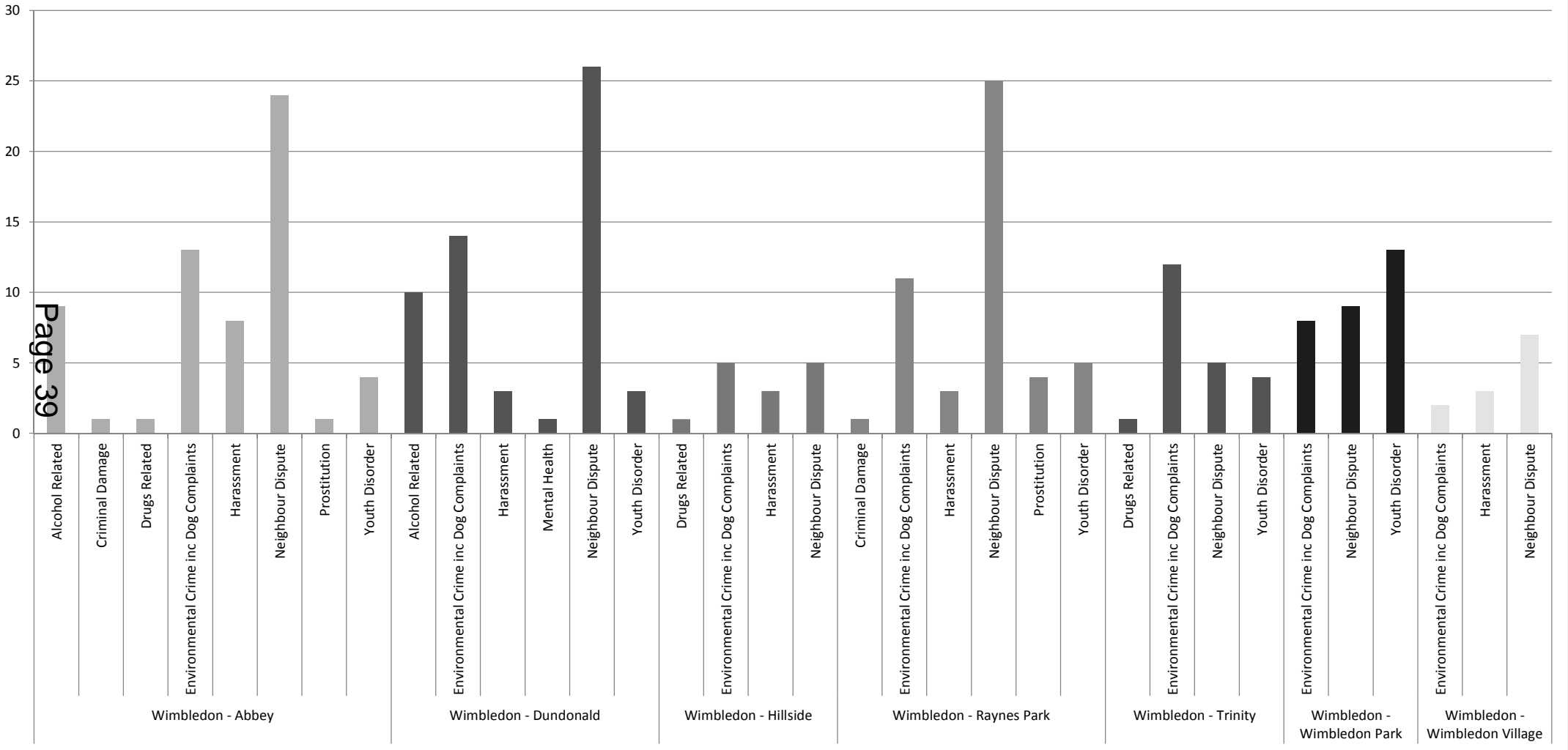
**APPENDIX 4 : Total Complaints For MITCHAM For The Period April 2013 to End February 2014 = 720**



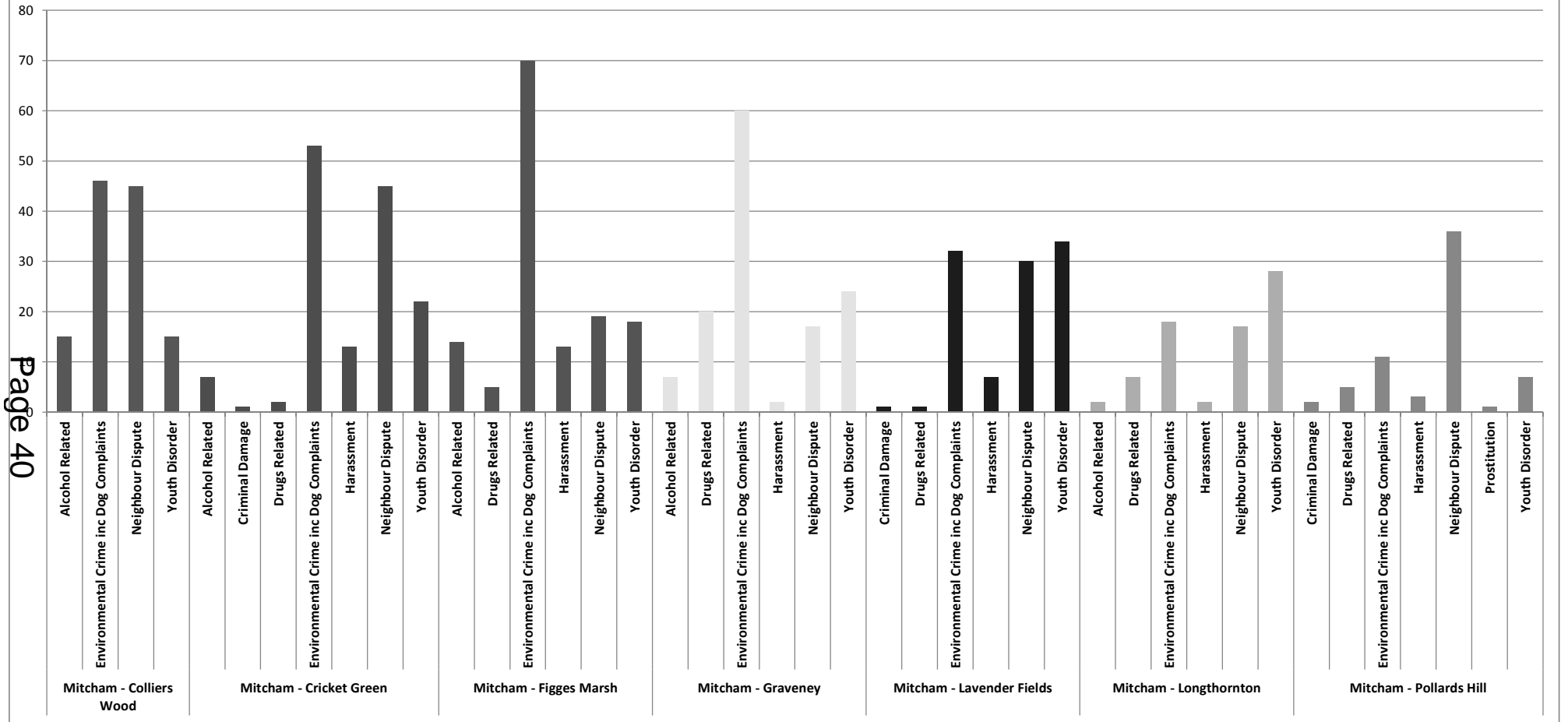
**APPENDIX 4 : Total Complaints For MORDEN For the Period April 2013 to End February 2014 = 261**



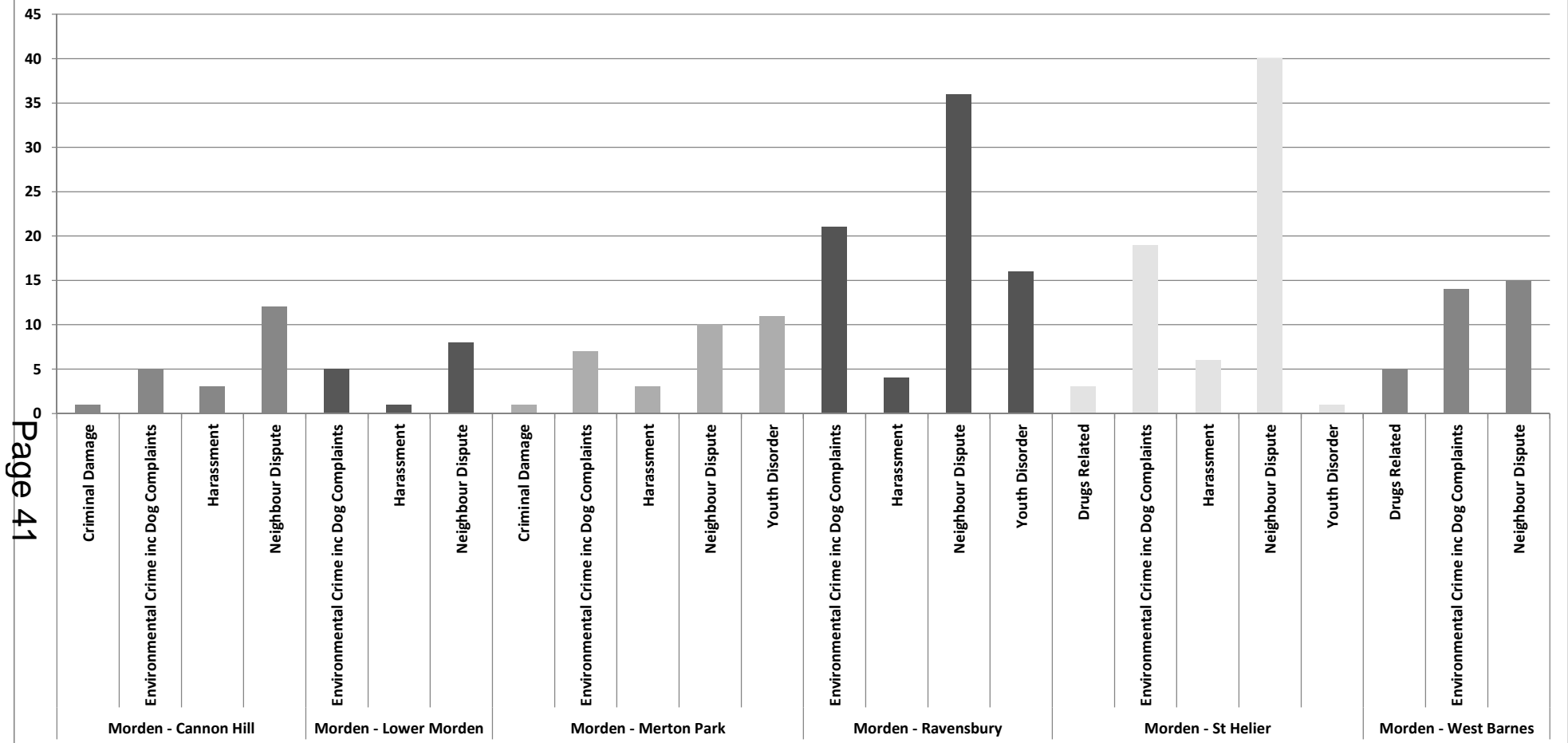
**APPENDIX 4 : Total Complaints for WIMBLEDON For The Period April 2013 to End February 2014 = 245**



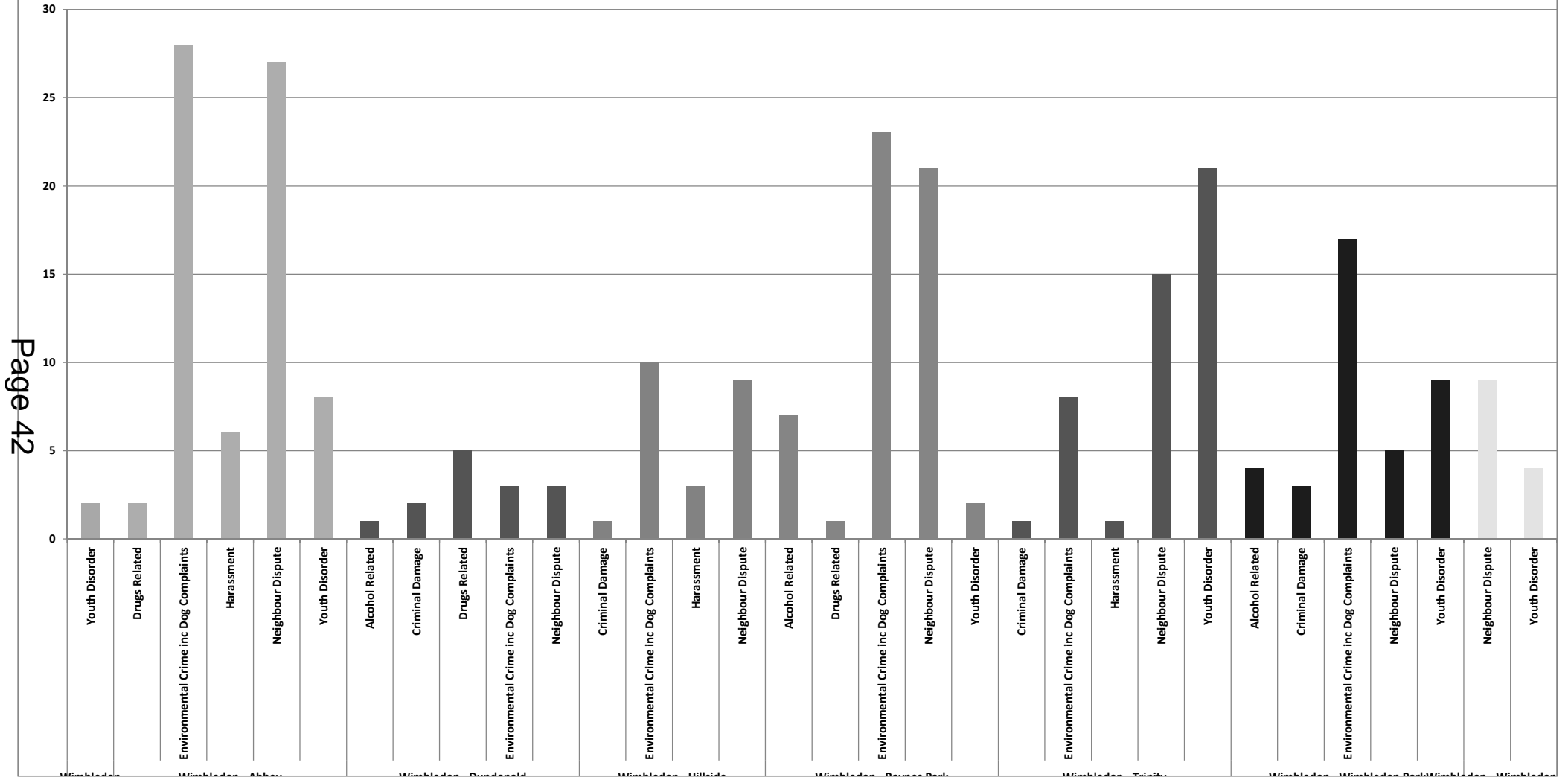
**APPENDIX 4 : Total Complaints For MITCHAM For The Period April 2014 To End February 2015 = 777**



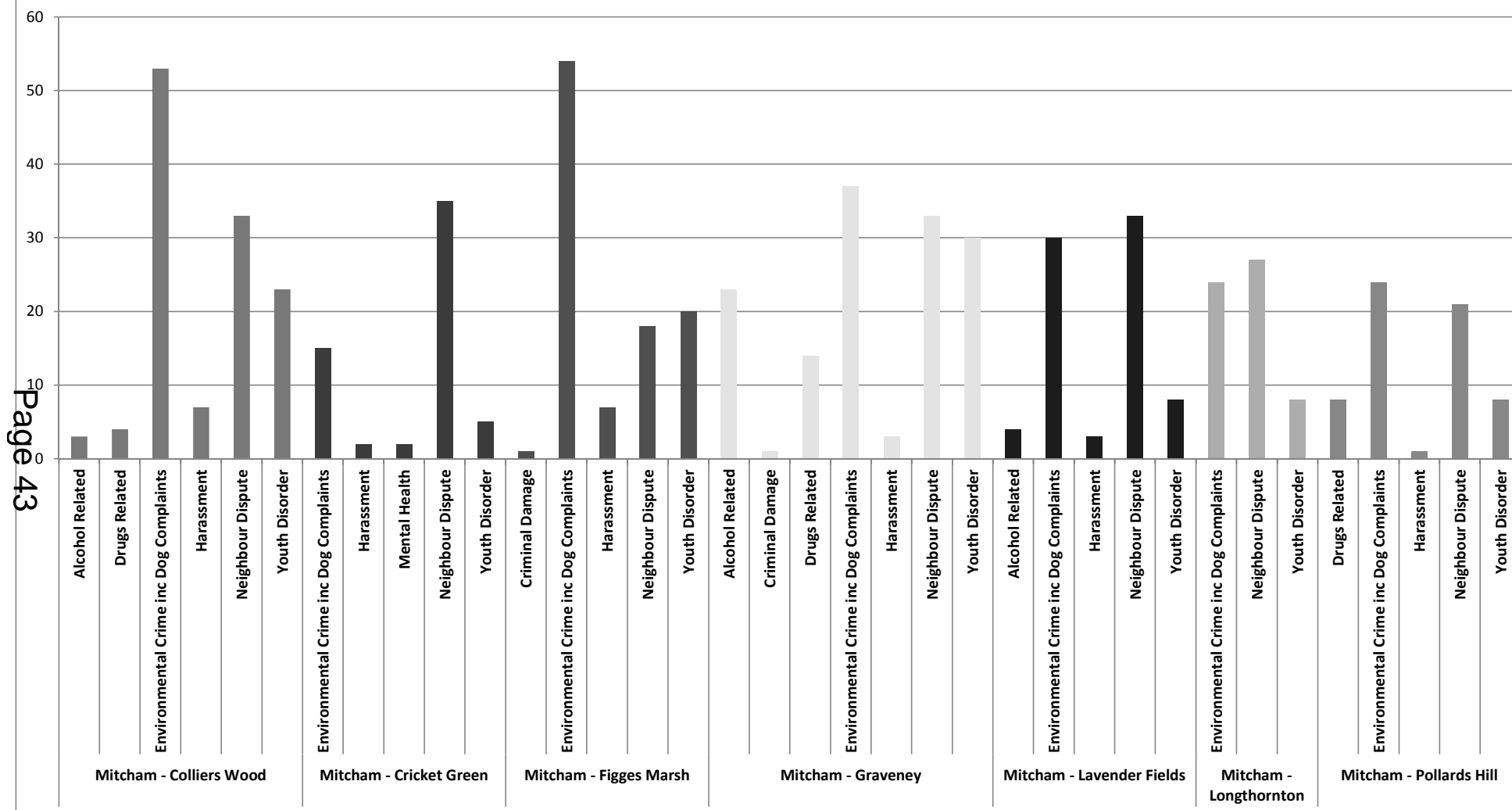
**APPENDIX 4 : Total Complaints For MORDEN For The Period April 2014 to End February 2015 = 247**



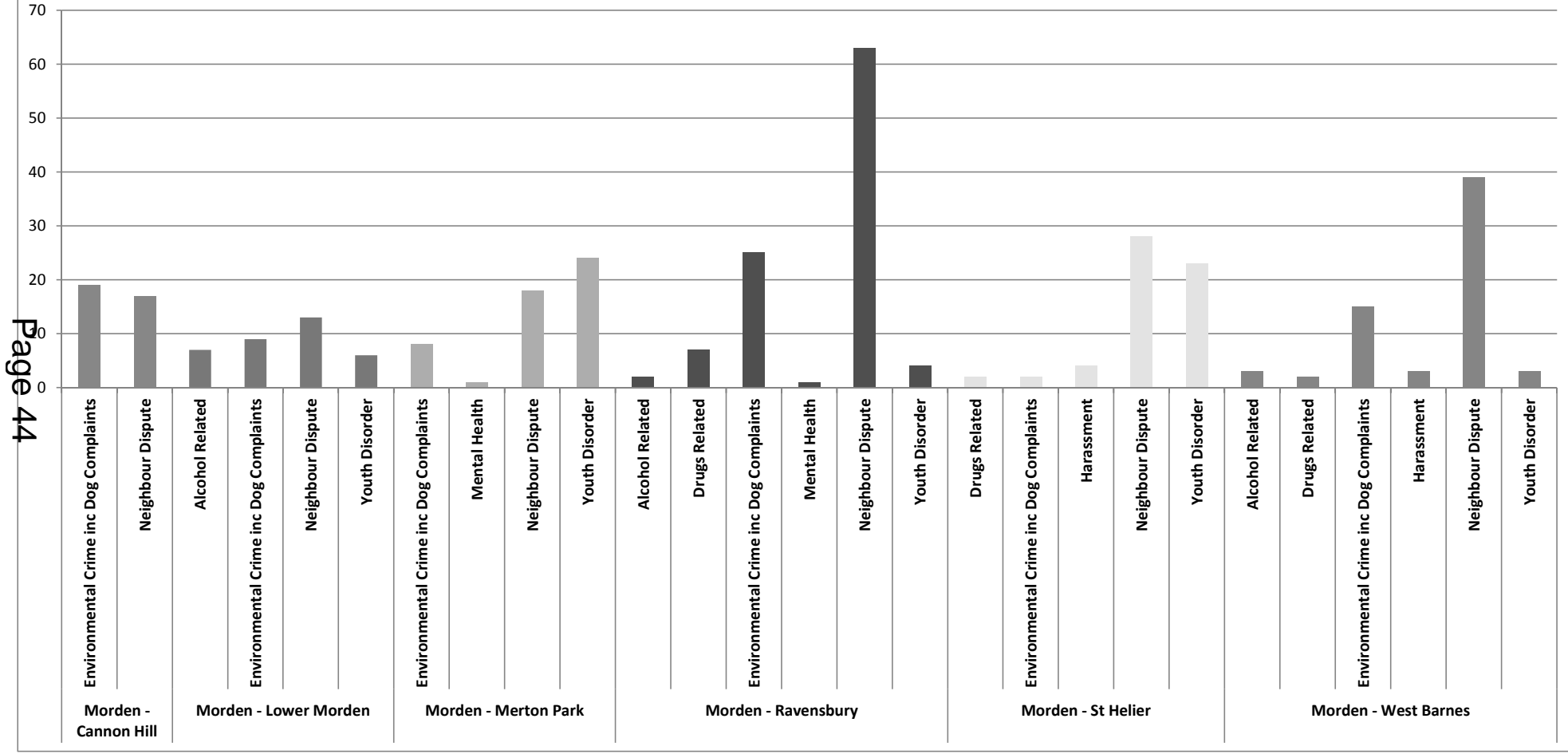
**APPENDIX 4 : Total Complaints for WIMBLEDON For The Period April 2014 to End February 2015 = 261**



**APPENDIX 4 : Total Complaints Reported For MITCHAM For The Period April 2015 to End February 2016 = 622**

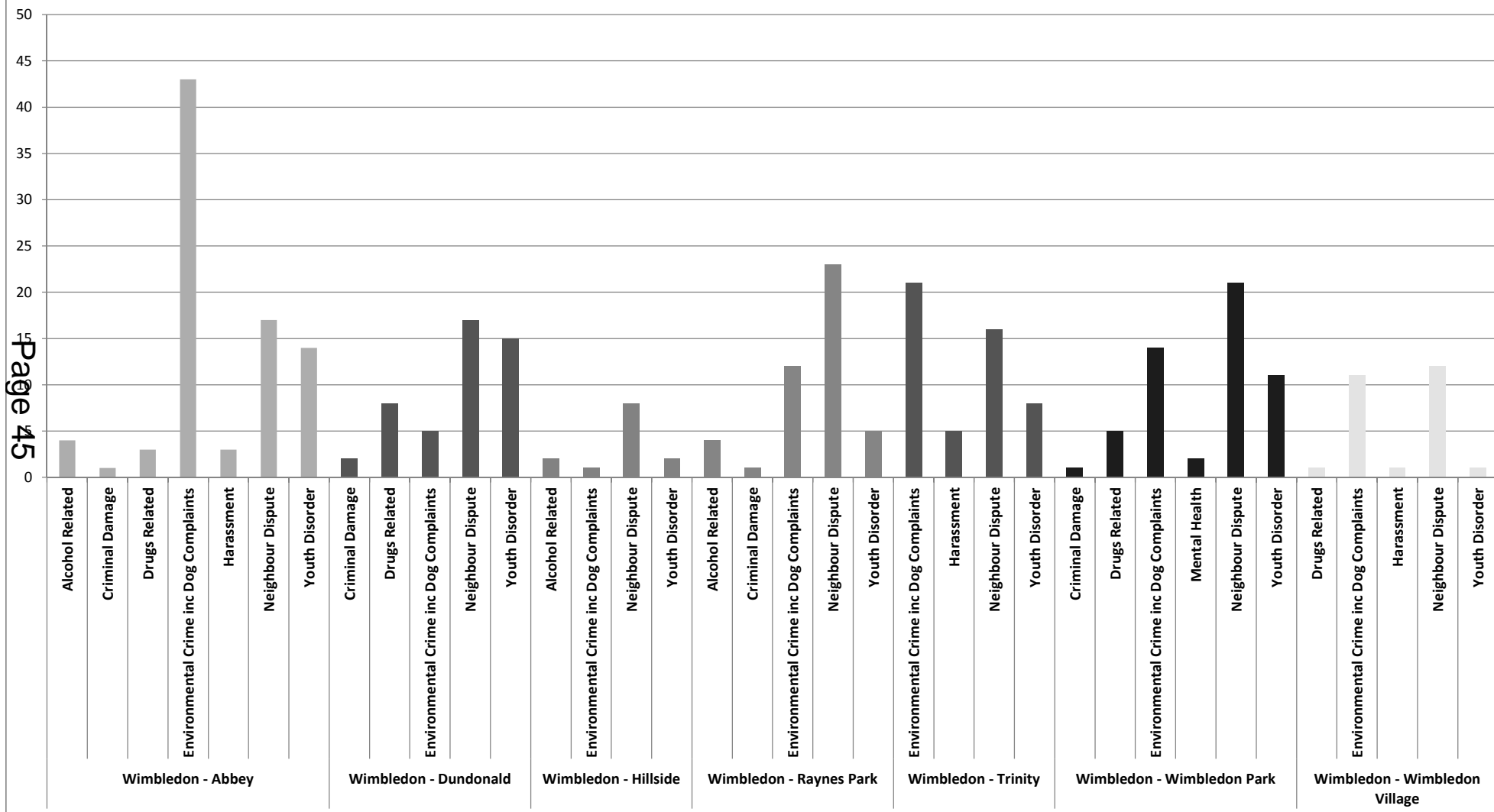


**APPENDIX 4 : Total Complaints Reported For MORDEN For The Period April 2015 to End February  
2016 = 348**





**APPENDIX 4 : Total Complaints Reported For WIMBLEDON For The Period April 2015 to End February 2016 = 320**



This page is intentionally left blank